

## DLPOPV

### DUAL LOW PRESSURE OPEN FRAME PINCH VALVE



**DUAL's** Pinch Valve consists of a tough, but flexible full bore sleeve, which forms part of the pipeline. The valve is closed mechanically via movement of the Pinch Bars located on opposite sides of the sleeve. The core of the Dual Pinch valve is the sleeve this sleeve is reinforced with high-strength fabric. The valves are well suited for on/off and throttling control applications where scale build up is a problem.

### FACE TO FACE COMPATIBLE WITH DIAPHRAGM VALVES

#### FEATURES

The Dual Pinch Valves double-open body with easily replaceable, flexible rubber sleeves.

- Low-cost pinch valve design.
- Seals in both directions.
- No blocking or leakage.
- Open frame design is light weight, adaptable and economical.
- Fabricated Steel frame.
- Robust construction.
- Rising spindle with dust cover.
- Bellows.
- Easy maintenance.
- Full bore.
- No packing to maintain.
- Sleeve is only vetted part.
- Face-to-face compatible with Diaphragm Valves.
- Sleeves are easily replaced.
- Sleeves are available in a variety of materials.
- Center pinch operation.
- All types of actuators can be fitted.

#### PRODUCT SPECIFICATION

**BODY:** Fabricated Carbon Steel.

**ELASTOMER SLEEVE:** Gum Rubber, Red Rubber, EPDM, Butyl, Chlorobutyl, Neoprene, Polyurethane, Viton and Hypalon.

**SIZE RANGE:** 50mm - 600mm  
(For larger consult factory).

**PRESSURE RATING:** 25 Bar  
(For higher pressure consult factory).

**PINCH BARS:** Carbon Steel Bar Stock.

**PINCH BAR GUIDES:** Stainless Steel with protective covers.

**FLANGED:** Drilled to SABS, ANSI, BS or DIN.

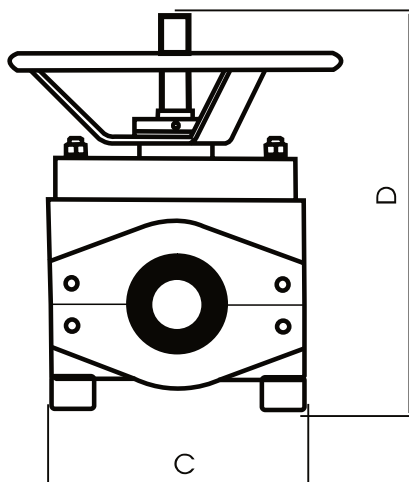
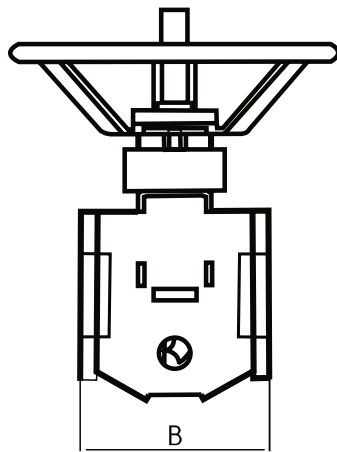
**VALVE INTERVALS:** 304 Stainless Steel spindles and guides, rubber sleeve, steel Pinch Bars and Nylon Bushing.

**TEMPERATURE:** -20°C to +80°C.

**MATERIAL CERTIFICATION:** Certified chemical and physical test reports can be supplied.

#### SLEEVE DESIGN





## ACTUATORS

All types of actuators can be fitted, electric, gearbox, hydraulic, pneumatic or handwheel.

## SLEEVE MATERIAL

Dual offers the following alternative sleeve materials, providing chemical and abrasive resistance to most media such as:

- Natural Red Rubber.
- Natural Black Rubber.
- Neoprene Rubber.
- Nitrile Rubber.
- EPDM Rubber.
- Reduced port sleeve for throttling applications.
- Urethane.

## APPLICATIONS

- Mining and mineral processing.
- Power generation.
- Sand and Gravel.
- Chemical and soda ash.
- Pulp and paper.

## DIMENSIONS AND WEIGHTS

VALVE SIZES (mm)	A/B F/F	C	D	E	SABS F/F
50	170	240	375	300	191
80	220	290	480	300	254
100	250	320	520	400	305
150	255	400	630	400	406
200	400	420	630	450	521
250	500	500	770	450	635
300	600	600	900	600	749
350	685	700	1070	600	980
400	785	800	1230	600	-
450	880	900	1430	700	-
500	980	1000	1560	700	-
600	1180	1100	1690	700	-



Contact Dual Valves for larger sizes. Dimensions are for guidance only - detailed dimension drawings available on request. All dimensions are in millimeters, unless stated.



CORPORATE HEADQUARTERS:  
166 ROTTERDAM ROAD  
(CNR ROTTERDAM ROAD & ANTWERP STREET)  
APEX BENONI GAUTENG SOUTH AFRICA

PO BOX 12520, BENORYN 1504  
TEL: +27 11 422 4326/7  
FAX: +27 11 421 7842  
EMAIL: SALES@DUALVALVES.COM

