

DUAL FLAPPER FLEX SWING CHECK VALVE



DUAL's Flapper Flex Swing Check Valves gate is designed to swing out of the line of flow at maximum capacity. The Seat is offset from horizontal and is hinge positioned so that the gravitational action causes the valve to close in proportion to the reduction in flow. The valve can be installed either vertically or horizontally.

PRODUCT SPECIFICATION

SIZE RANGE: 80mm - 600mm.
For Larger sizes contact the factory.

VALVE BODY: Cast SG Iron, Aluminium or Stainless Steel.

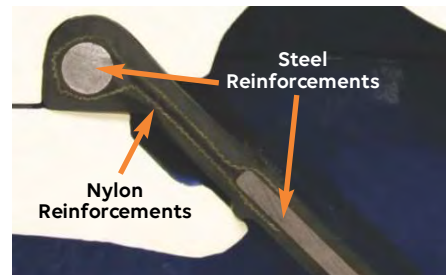
OPERATING TEMPERATURE: -10°C to +80°C.

FLAPPER DISC MATERIAL: Steel construction, coated with Viton, Natural Rubber, Hypalon, EPDM or Urethane.

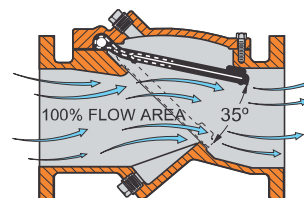
VALVE BODY LINING: Natural Black Rubber.

FEATURES

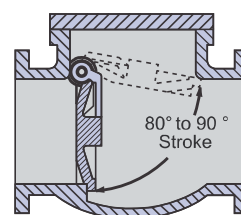
- Non-Clog Design.
- Rubber lined body and seat.
- Non clogging, self cleaning ball.
- Reinforced disc inside the flapper.
- Can be mounted in Horizontal and Vertical.
- Non-Slam closing action - Short 45° stroke.
- Perfect sealing.
- Low head losses.
- Removable bonnet for cleaning or replacing of the flapper check disc.
- Maintenance free.
- Full bore.
- Silent closure, reduces pipe hammer.
- Simple construction - one moving part.



Reinforced Flapper Disc

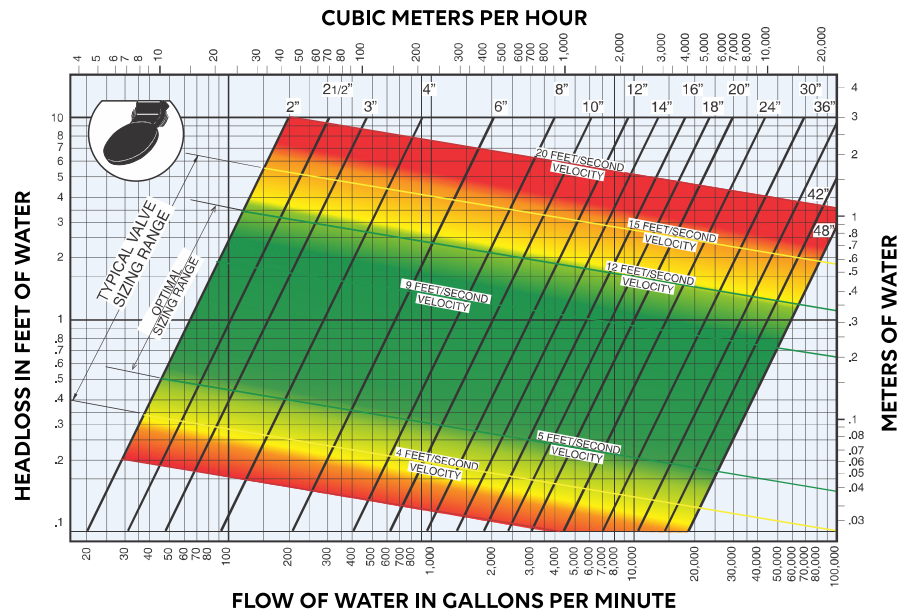


Flapper-Flex Geometry

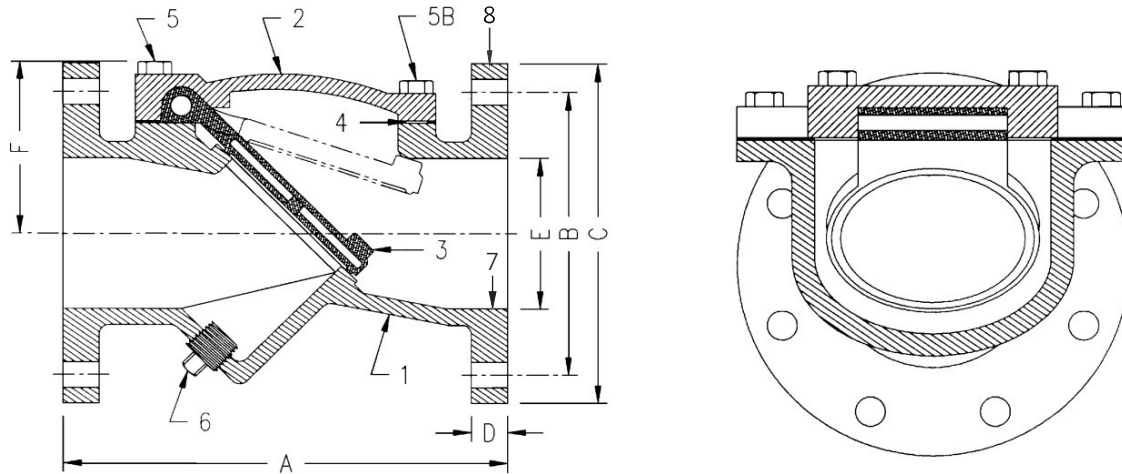


Conventional Geometry

HEADLOSS CHART



OUTLINE DIMENSIONS AND SPECIFICATIONS



PART	DESCRIPTION
1	Body/Cover
2	Cover
3	Disc/Flapper
4	Body Gasket
5	Bolts and Nuts
6	Plug
7	Body Lining
8	Paint

VALVE SIZE mm	F/F A	B	C	D	E	F	NO OF BOLTS	WEIGHT kg
50	200	116	150	20	50	82	4	12
80	230	150	183	22	80	82	4	17
100	275	183	220	23	100	113	4	30
150	367	232	269	25	150	144	8	55
200	477	286	330	27	200	186	8	99
250	600	349	400	29	250	242	8	163
300	700	416	465	30	300	289	12	228
350	780	440	514	33	350	339	12	308
400	800	539	575	35	400	390	12	445
450	900	557	612	38	450	419	16	601
500	1000	612	673	41	500	468	20	748
600	1200	722	784	46	600	557	20	963

Contact Dual Valves for larger sizes. Dimensions and weights are for guidance only - detailed dimension drawings available on request. All dimensions are in millimeters, unless stated otherwise.



CORPORATE HEADQUARTERS:
166 ROTTERDAM ROAD
(CNR ROTTERDAM ROAD & ANTWERP STREET)
APEX BENONI GAUTENG SOUTH AFRICA

PO BOX 12520, BENORYN 1504
TEL: +27 11 422 4326/7
FAX: +27 11 421 7842
EMAIL: SALES@DUALVALVES.COM

