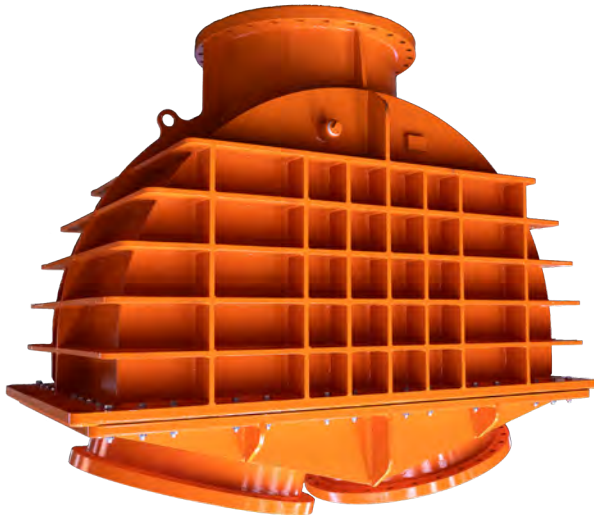


**DUAL DOUBLE NON-RETURN VALVE**



**DUAL's** Double Non-Return Valve operates on the discharge side of two pumps in parallel. Both pumps can run simultaneously or independently. When one pump is switched off, the ball will automatically drop back stopping the back flow to the other pump.

**FEATURES**

- Flush ports.
- As the elastomer coated ball moves, it rotates with the flow.
- This ensures that the valve self cleans and permits it to open and close reliably even under severe conditions of slurry build up.
- Minimal pressure drop.
- Replaceable ball and seats.

**PRODUCT SPECIFICATION**

- BODY:** Carbon Steel (fabricated).  
The valve body can be lined in Natural Black, Neoprene, Hypalon, EPDM Rubber, Ceramic or Urethane.
- SEATS:** Natural Rubber, Urethane or Stainless Steel (replaceable).
- BALL:** Urethane or Rubber (Ball replaceable).

**SIZE RANGE:** Valve body and Face-to-Face dimension can be changed to suit existing applications.

**PRESSURE RATING:** 10, 16, 25, 40 and 60 Bar.

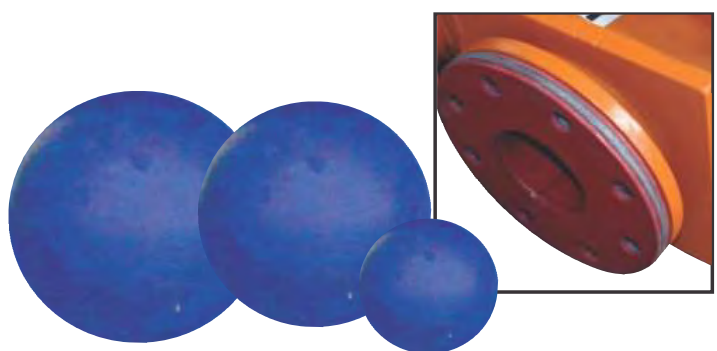
**FLANGED CONNECTION:** Shouldered end connections for victaulic couplings if required.

**VALVE INTERVALS:** Valve flanged to customer specification. Flushing port in ball body.

**OTHER:** Different mounting brackets can be fitted to suit application.

**FABRICATED VALVES**

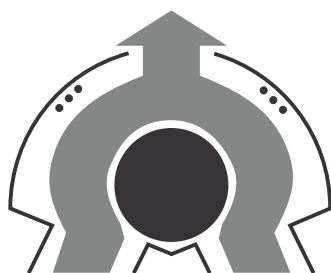
**REPLACEABLE BALL AND SEATS**



You can run both pumps simultaneously or one at a time.



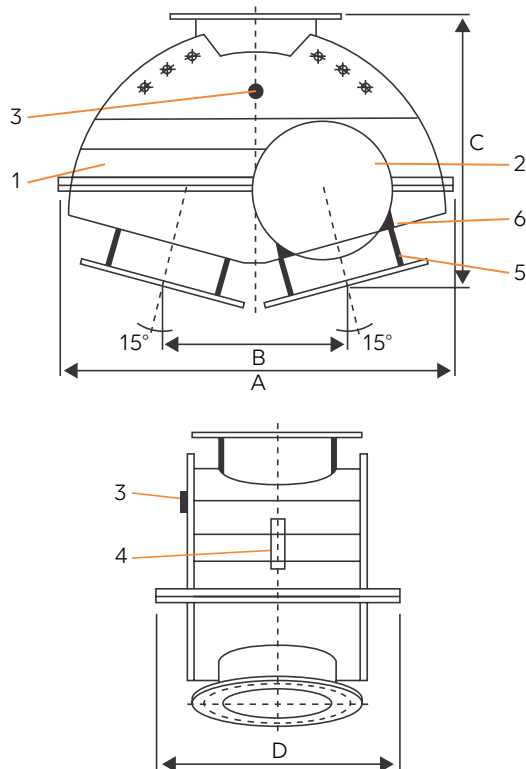
FLOW FROM RIGHT PUMP



FLOW FROM BOTH PUMPS



FLOW FROM LEFT PUMP



### APPLICATIONS

- All slurry applications requiring trouble free pump changeover.
- Particularly suited for mill cyclone feed pumps.

	PART	DESCRIPTION
1	Body	Carbon Steel / Stainless Steel
2	Ball	Urethane or Rubber (Replaceable)
3	Flushing Port	Carbon / Stainless Steel
4	Lifting Lugs	Carbon / Stainless Steel
5	Body Lining	*Rubber, Urethane or Ceramic
6	Body Seat	*Rubber, Urethane or Replaceable

Dimensions and weights are for guidance only - detailed dimension drawings available on request. \* EPDM, Nitrile, Chlorobutyl or Natural Red.

VALVE SIZE		A		B		C		D		WEIGHT		BALL SIZE	
Inches	mm	Inches	mm	Inches	mm	Inches	mm	Inches	mm	LBS	KG	Inches	mm
2.5	65	17.20	430	11.33	288	9.70	246	11.00	281	105	48	3.6	90
3	80	18.40	460	11.33	288	9.70	246	11.00	281	112	51	3.6	90
4	100	19.80	495	9.60	240	14.20	356	10.30	259	112	51	6	150
6	150	25.40	635	12.00	300	17.00	425	13.90	349	206	94	8	200
8	200	32.88	822	14.00	350	20.60	517	17.00	425	363	165	10	250
10	250	35.30	883	16.60	416	23.00	576	19.50	489	473	215	12	300
12	300	42.40	1060	19.50	489	27.00	679	22.80	572	653	297	14	350
14	350	44.50	1114	21.80	546	29.00	727	24.00	603	847	385	16	400
16	400	50.20	1257	24.30	617	33.10	829	26.90	673	1089	495	18	450
18	450	56.20	1406	26.00	651	37.30	933	30.00	756	1663	756	20	500
20	500	61.40	1537	28.70	719	40.00	1002	34.60	867	2118	963	24	600
24	600	72.20	1807	34.40	862	46.70	1168	39.30	984	2312	1051	28	700
30	750	90.00	2286	47.00	1193	54.00	1371.6	61.75	1568	2850	1294	36	900
36	900	102.00	2605	48.00	1216	84.00	2137	61.75	1568	5000	2257	39	1000

Contact Dual Valves for larger sizes. Dimensions are for guidance only - detailed dimension drawings available on request. All dimensions are in millimeters, unless stated.



CORPORATE HEADQUARTERS:  
166 ROTTERDAM ROAD  
(CNR ROTTERDAM ROAD & ANTWERP STREET)  
APEX BENONI GAUTENG SOUTH AFRICA

PO BOX 12520, BENORNYN 1504  
TEL: +27 11 422 4326/7  
FAX: +27 11 421 7842  
EMAIL: SALES@DUALVALVES.COM

