

DUAL BEVEL GEARBOX



FEATURES

- All Gearboxes have lubricated parts.
- Cast SG Iron housing and base plate.
- Maintenance free.
- 304 Stainless steel input shaft.
- Sealed to IP 67.
- Totally enclosed housing, grease filled.
- Primed finish.
- Optional coatings available.
- The Gearbox connecting the flange is in accordance to ENISO521 or DIN3210.
- Cost effective design and is manufactured from high quality materials.
- Zinc plated fasteners.
- Screw protective cap.
- Gearbox can operate in any mounting position.
- The Dual Gearboxes are approved for installation in explosion hazardous areas.

DUAL's hand operated Bevel Gearbox is used to operate the Gate, Pinch, Dual and Penstock valves with or without rising stem. The Bevel Gearbox is designed to accept the full thrust forces which occur during opening and closing of the valve, reducing manual rim effort when operating.

OPTIONAL EXTRAS

- Position indicators.
- Coatings suitable for aggressive environments.
- Stem protective tube.
- Handwheels.
- Bellows for the valve stem.
- Extensions.

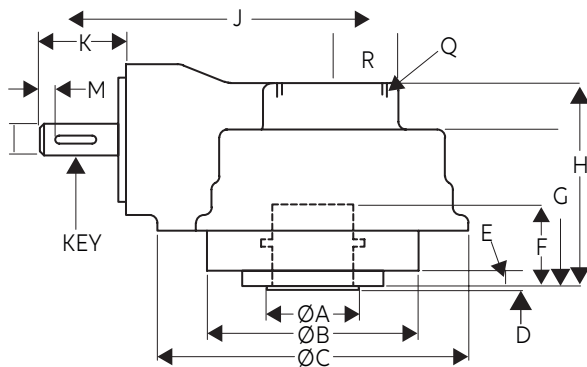
FUNCTIONAL TEST

All Gearboxes are tested after assembly, according to Dual's inspection specification and, on request, material certification and inspection records can be supplied.

VALVE ATTACHMENT



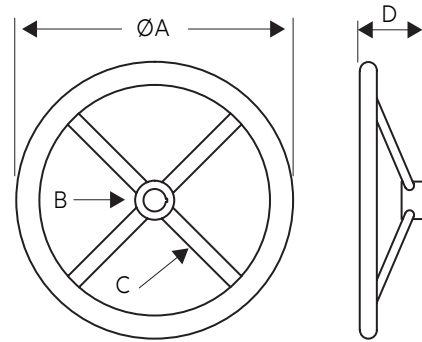
DIMENSIONS AND WEIGHTS



GEARBOX	DBG414 F14	DBG414 F16	DBG616 F16
KEY	8mm x 7mm x 40mm		
ØB	175	202	210
ØC	202	202	260
D	4	5	5
E	35	35	53
F	78	78	97
G	101	101	120
H	130	130	159
R	50	50	62.5
J	228	228	251
K	113	113	113
ØL	30	30	30
M	5	5	5
N	50	50	50
P	97	97	120
Q	2.5"BSP	2.5"BSP	3.5"BSP

Dimensions and weights are for guidance only - detailed dimension drawings available on request. All dimensions are in millimeters, unless stated.

HANDWHEEL DIMENSIONS



TYPE	A	B	C	D	WEIGHT (KG)
DHW300	300	30	30	100	10
DHW400	400	30	30	100	45
DHW500	500	30	30	100	20
DHW600	600	30	30	100	30
DHW700	700	30	30	100	40

MATERIAL SPECIFICATIONS

DESCRIPTION	MATERIAL	ISO STANDARD
Gear case & End Cap	Ductile Iron	BS EN 1561 EN-GJL-250
Baseplate	Ductile Iron	BS EN 1563 EN-GJS-450-10
Output Gear	Ductile Iron	BS EN 1563 EN-GJS-700-2
Input Gear	Steel	BS 970 605M36T
Drive Sleeve A1	Steel	BS 970 070M20
Drive Sleeve A2	Aluminium Bronze	BS 1400 AB2
Fixing Screws	Ht Steel Metric	BS 3693
O Ring Seals	Nitrile	
Thrust Bearings	Needle Roller Bearings	
Grease		

BASEPLATE DIMENSIONS

TYPE	ISO 5211	AØ(MM)	HOLE DETAILS (45°C OFF CENTRES)
DBG414	F14	Ø99.95 - 0.05	4 X M16 X 20 DEEP ON Ø 140.0 PC
	F16	Ø129.95 - 0.05	4 X M20 X 25 DEEP ON Ø 165.0 PC
DBG416	F16	Ø129.95 - 0.05	4 X M20 X 25 DEEP ON Ø 165.0 PC

APPLICATIONS

- Dual Valves
- Gate Valves
- Globe Valves
- Penstock Valves
- Knife Gate Valves
- Pinch Valves

PERFORMANCE SPECIFICATIONS

TYPE	RATIO	OUTPUT TORQUE (Nm)	MECHANICAL ADVANTAGE	THRUST (KN)	STEM ACC (mm) KEYED/SCREWED		TEMP. RANGE (°C)	FLANGE OUTPUT	WEIGHT (kg)
DBG414	4:1	70	3	178	52	55	-40 to +120	F14	17
								F16	24
DBG416	6:1	1355	5.1	356	68	73	-40 to +120	F16	35



CORPORATE HEADQUARTERS:
166 ROTTERDAM ROAD
(CNR ROTTERDAM ROAD & ANTWERP STREET)
APEX BENONI GAUTENG SOUTH AFRICA

PO BOX 12520, BENORYN 1504
TEL: +27 11 422 4326/7
FAX: +27 11 421 7842
EMAIL: SALES@DUALVALVES.COM